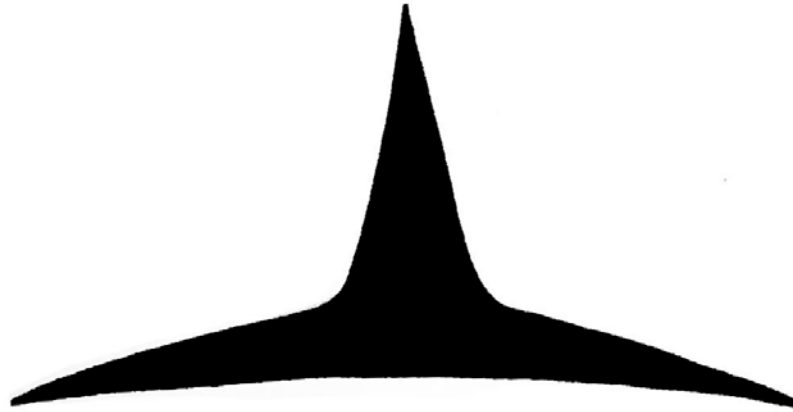


Eye High in the Forest

Walking Among Giants



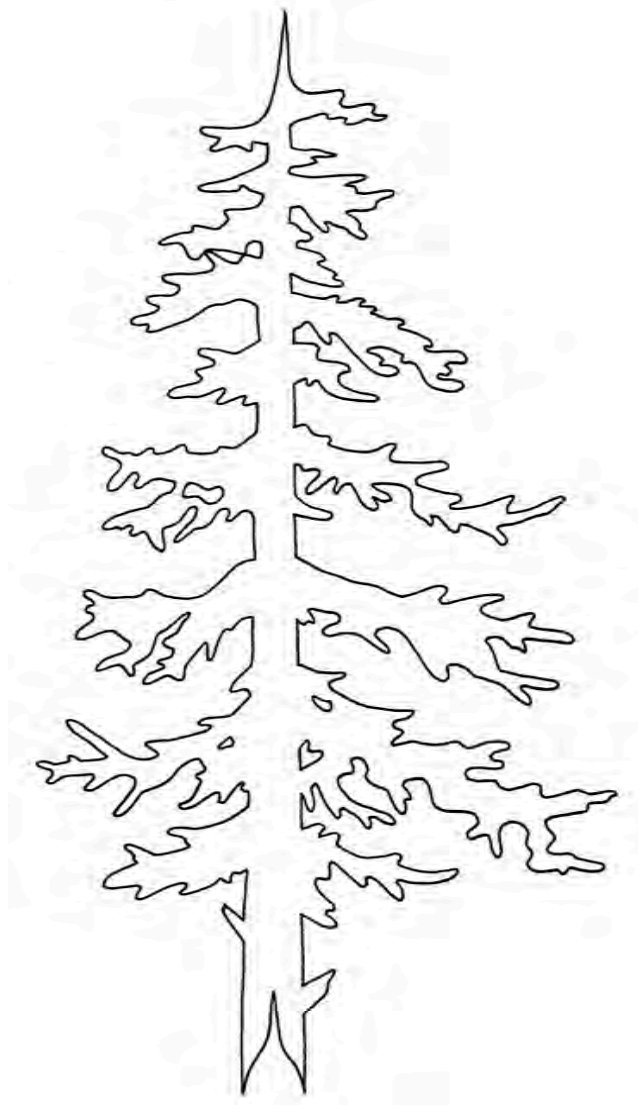
A Kwiakah-led initiative to support early childhood education.

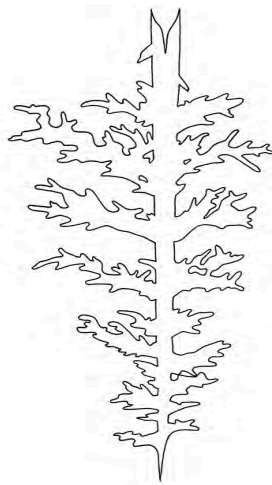


The Kwiakah Nation gratefully
acknowledges the financial support of the
BC Aboriginal Childcare Society.

© Kwiakah First Nations 2021

To all LigwíꞤdax̱w children, our future stewards.





Eye High in the Forest

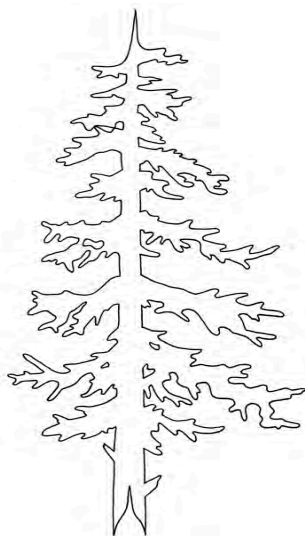
Walking Among Giants

Written by Melanie Chickite and Deidre Cullon

Art by Jessica Chickite

Photography by Deidre Cullon and Len Apedaile

Translation Support by G^wixsisəlas (Emily Aitken)





Eye High

Imagine you are standing in the forest. What do you see?



Tree Branches

Kʷaǰkəni

A tree branch is the part of the tree with needles or leaves. Branches come in all sizes and shapes.

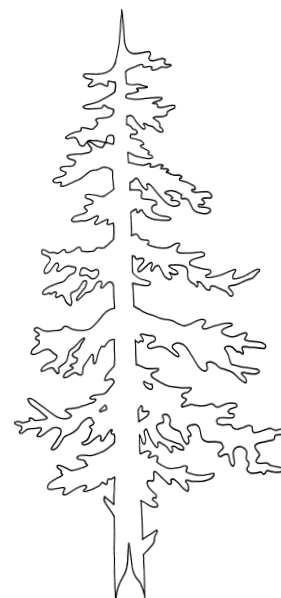




Pitch

ǻʷədʒigē?

Pitch moves the water and nutrients in the tree. It is thick, gooey and sticky. Some pitch can be used as medicine.





Nurse Log

As old or dead trees decay they can support the growth of new trees. The old tree, or nurse log, provides nutrients to the young tree, helping it to grow strong very quickly.





Nature Tree

Nature trees are sick or dead trees that haven't fallen yet. They play a vital role in the lifecycle of hundreds of animals in the forest. They provide a place to nest, rest, eat and grow.





Douglas Squirrel

Təminas

The Douglas Squirrel lives in coniferous forests. Their favourite food is the seeds in Douglas fir cones and you can see the broken cones from their meal on the forest floor. Listen when you are in the forest. You might hear the squirrel chattering at you.

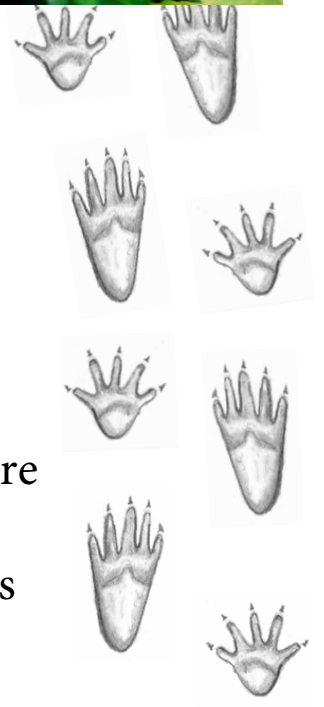
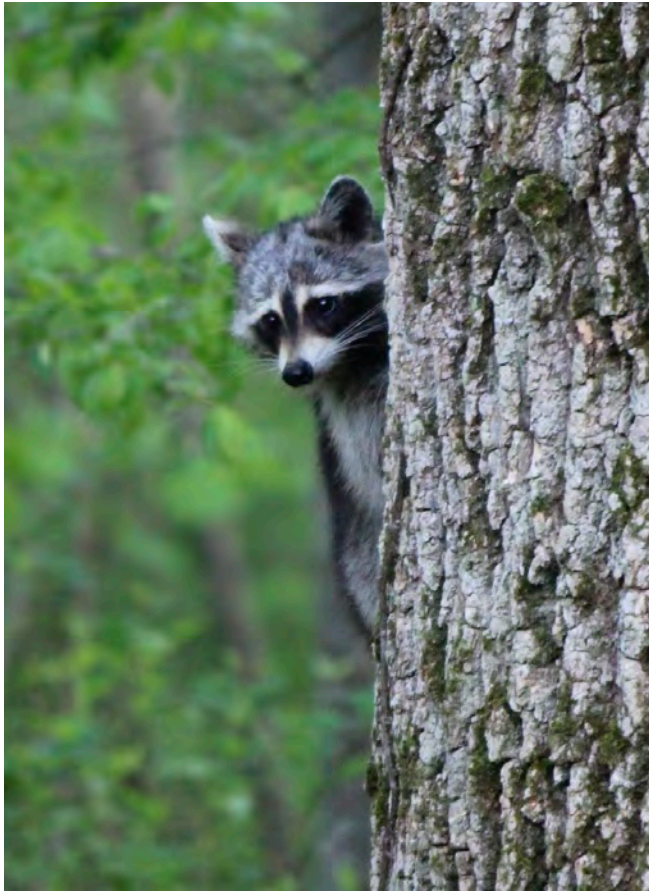


Woodpeckers



λаланəʔi (Woodpecker)
Gʷəldəm (Red-Shafted Flicker)

Woodpeckers eat insects off the trunks and branches of trees. Some eat the pitch by pecking holes into the bark. Often woodpeckers communicate by drumming with their beak.



Raccoons

Mayus

Raccoons are just about everywhere because they will eat just about anything, including berries, seeds and mice.





Deer and Elk

Giwas lu ǰəwels

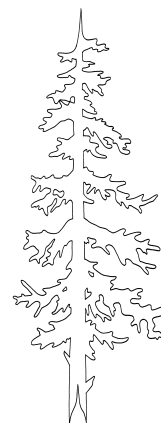
Deer and elk eat all kinds of plants. Male deer and elk have antlers that start to grow each spring but fall off in the late autumn.



Black Bear

ł̌aʔi

Black bears eat a lot of berries and other vegetation. They spread berry seeds throughout the forest in their scat.

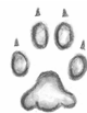




Grizzly Bear

Nən

Grizzly bears are large, with a hump at their shoulders. One of their favourite foods is salmon. They help to spread the nutrients from the salmon throughout the forest.



Wolf

ʔuligən

Wolves live in packs in the forest. They are usually shy and avoid humans. They hunt animals of all sizes and are important for keeping the forest population balanced.



Cougar

Mam'isa

Cougars are large cats. They are hunters and are strong enough to kill a deer or elk. They too help to keep the animal populations balanced.



Eye High

So many things to see when you are standing in a forest.



Eye High In the Forest

Walking Among Giants

Imagine you walking through the forest. What do you see? What kinds of large plants and animals might you see?

